



## SCOUT II

### DESCRIPTION

Builder:	BROOKE YACHTS	Accommodation
Built/Refit:	1993/2018	Cabins: 4
Length: (m/ft)	39.6 / 129'11"	Guests: 9
Beam:	9.2 / 30'02"	Crew: 9
Draft:	3.1 / 10'02"	
Hull material:	STEEL	
Engines:	2 X 510 HP CATERPILLAR 3408-B	
Range:	4 200 N.MILES	

---

NOT AVAILABLE FOR SALE TO U.S RESIDENTS WHILE IN U.S. WATERS.

All speeds, measurements, capacities, consumptions, etc. may be approximate or estimated. Specifications provided for information only. Data was obtained from sources believed to be reliable and is not guaranteed by owner or brokers. Buyer assumes the responsibility to ascertain the correctness of all data contained herein and otherwise provided and must instruct his agent and surveyors to confirm all details for accuracy prior to purchase. Subject to prior sale, price and inventory change, or withdrawal from market without notice

## MAIN CHARACTERISTICS

Name	SCOUT II	
Vessel Type	Twin Screw Displacement Exploration Yacht	
Built	1993	
Refits	2014/2018 Complete mechanical/cosmetic refit 2017/2018	
Designer	Terence Disdale	
Naval Architect	Three Quays (now BCTQ)/ Geoffrey Van Aller Refit 2017/2018	
Builder	Brooke Yachts International Ltd. UK	
Hull Material	Steel	
Superstructure Material	Steel	
Classification	Lloyds Registry Classification $\nabla$ 100 A1, LMC current until 2022 25-year survey completed 2018	
Flag	Marshall Islands, Private Registry	
LOA	39.6m	129'11"
Beam	9.20m	30'02"
Draft	3.10m	10'02"
GRT	397 GT	
Net Tonnage	118 T	
Propulsion & Engines	2 x 510 HP Caterpillar 3408-B (stripped and rebuilt in Jan 2014/ Lloyds main engine survey 2018) approx. 13,000 hrs. total, July 2019 Maskin Electronic control monitoring system installed 2017 Dual hydraulic PTO's for running stabilizers/crane/windlass etc. installed 2017	
Transmissions	ZF (factory inspected /rebuilt to new condition 2017)	
Maximum Speed	11.0 knots	
Cruising Speed	10.0 knots	
Economical Speed	9.0 knots	
Range in Nm	4,200 nm @ 9.0 knots @ 1600 RPM 3,600 nm @ 10.0 knots @ 1750 RPM	
Consumptions	223 Litres / 59 Gallons per hr @ 12 knots (2100 RPM) 145 Litres / 37 Gallons per hr @ 10.5 knots (1750 RPM) 115 Litres / 30 Gallons per hr @ 9.5 knots (1600 RPM) (incl. 1 x generator)	
Bow Thruster	Wesmar twin prop 100HP (stripped/serviced in Jan 2016)	

Generators	2 x 70 Kw Northern Lights Gens new 2017, approx. 4,000 hrs. July 2019 1 x 32kw Northern Lights Gen new 2018, approx. 140 hrs. July 2019
Stabilizers	Quantum model 1200 Zero Speeds with 4 fins, 2.5m2 each, new 2017
Electrical	Atlas 240/ 480V shore power transfer (new 2017) New Electrical panel/main switchboard by MSHA (2017) 380V 3-phase 50Hz AC electrical system 220V single phase 50Hz AC electrical system 24V DC electrical system
Frequency Convertor	75 kVA ShorPOWER HV Ultra Series with Seamless transfer in lazarette
Shipboard Alarm system	Selco digital displays and readouts (new 2018)

## CAPACITIES

Fuel Capacity	47,870 Ltrs.	12,645 USG
Fresh Water	8,407 Ltrs.	2,221 USG
Grey Water	1,800 Ltrs.	476 USG
Dirty Oil	197 Ltrs.	52 USG
Lube Oil	200 Ltrs.	53 USG
Watermakers	2 x FCI commercial water makers 12,000 Ltrs. per day each (3100 gallons per day each- Neptune Modular Series 11.75 m3, HMI Touch Screen Control, Automated Pressure Control (APC), 316SS HPP, Dual 5-micron cartridge, MODBUS ready, NEMA 4X Enclosure, NEMA 4X actuators, Automated Start and shutdown, automated fresh water flush. New 2018	

## ACCOMMODATIONS

9 Guests in:

Owner's Stateroom with queen bed

VIP Stateroom with queen bed

Guest cabin with queen bed

Guest cabin with a double and a single bed

## OVERVIEW

Built in steel to an unusually tough specification and Lloyds Registry Classification, SCOUT II was designed as a sturdy, ocean-going exploration yacht for global cruising. Delivered in 1993 with naval architecture by Three Quays (now BCTQ), she has consistently surpassed the expectations of her three owners.

Privately used and meticulously maintained, she was refitted in 2000, 2002 and 2014.

Then she underwent a refit and rebuild between 2016 and 2018 which included a 5m extension aft and a 1m extension forward. The works were carried out by Thunderbolt Marine in Savannah, GA, (2016/2017) and at Marine Group Shipyard in San Diego (2017/2018). Geoff Van Aller of Van Aller Yacht and Naval Design was in charge of the extension projects. All projects were completed with Lloyds Registry approval.

With a massive 9.2m (30') beam, the extensions have exponentially increased SCOUT's already significant deck spaces. At almost 400 Gross Tons, she dwarfs most other yachts of similar length. In terms of performance, build quality and maintenance SCOUT II is in a league of her own.

The 2016/2018 refits included the following:

- 5m extension aft
- Bow reshaped and extended 1m forward
- New modernized mast installed
- Profile bulwark cut outs

SCOUT II also completed a massive mechanical/machinery replacement or overhaul that included:

- Main Engines serviced and updated- new water pumps, turbos, injectors, gaskets, heat exchangers
- Maskin Electronic monitoring
- Laser engine alignment
- Full Lloyds (25-year Special Survey) and Marshall Islands Surveys incl. hull thickness etc
- Rudders replaced and increased in size
- Stabilizers replaced with Quantum zero speeds, 4 fins, 2.5m<sup>2</sup> each
- Monel prop shafts aligned and turned (Lloyds approved with cert) and new cutlass bearings
- Propellers replaced with 5 blades, polished and balanced
- Transmissions rebuilt

- Laser sighted alignments
- Nautical Structures med mooring stern and new passarelle system installed
- New stern capstans
- Pipework replaced
- Most wiring and breakers replaced throughout
- New hydraulics systems
- New Sea chest system installed
- New Engine room ventilation system with AC added
- New MSHS main switchboard and panel
- New Atlas Shore power transformer
- New 75 kVA ShorPOWER HV Ultra Series Frequency convertor with Seamless transfer
- Generators replaced and third gen added
- 1-ton Crane replaced with 2.5-ton Nautical Structures crane -installed with LR approved structure
- All major pumps replaced or serviced
- New water filtration including UV light system
- New blackwater Hamman system upgraded
- New air conditioning chiller and AC handlers
- New towing system rated for 100t of pull
- New tender and all other tenders serviced
- Windlass rebuilt
- Complete new electronics package and wheelhouse modernization
- New CCTV system
- New exterior lighting
- New A/V system completely replaced with control 4 system
- New exterior covers
- Complete paint job from mast to waterline and new varnish

The stabilizer system was replaced (4 fins, 2.5m<sup>2</sup> each) with a Quantum 1200 system with Zero Speed which increased her (already excellent) comfort at anchor. The project included the removal and re-fitment of brand-new fins with new watertight hull compartments. In addition, the entire hydraulics system was replaced to drive the bow thruster, new crane, passarelle, and aft capstans through the Quantum control system, plus all associated programming and tuning.

## EXTERIOR DECKS

The aft swim platform with two staircases provides a grand entrance from the lower stern platform while fishing or enjoying water sports. Access to the aft deck is also via the passarelle.

There is alfresco seating for 12 on a custom eleven-foot Release Marine teak inlaid table on the aft deck which offers endless other entertaining options.

Forward on the bow, there are multiple toys and tenders including 2 x RIBs, stand up paddle boards and a selection of other water toys are stored in the lazarette. Having the tenders forward means all decks on all three levels are free for owners and guest use.

Moving to the upper decks, there are further options for guests to sunbathe and relax, as well as a large 12 seat table for formal dining outside on the owner's aft deck behind the sky lounge with built in infra-red heating for the occasional cool night dining. Easy chairs, chaise lounges and outside lounging areas abound.

The massive sundeck above provides a Jacuzzi, two custom Release Marine helm chairs, sunbathing areas, a BBQ area and a pizza oven as well as day head with full shower in the back of the mast structure.

## INTERIOR

SCOUT II offers a high degree of privacy for the Owner and their guests, with crew and guest areas cleverly separated. The interior has a classic elegance with the use of limed teak and individually commissioned ornaments and paintings.

The full beam sky lounge on the upper deck, provides two distinct areas with an Owner's study forward and a living and dining area aft. The Owner's study offers a 180-degree view forward over and above the wheelhouse. In addition to the desk/study area, there is a seating area with teak table, together with a large u-shaped cushioned area around the windows, for guests to relax and enjoy the view. The sky lounge area is aft before doors out to the upper aft deck covered dining area.

On the main deck looking from the aft deck forward into the main saloon, there is a bar area to port and large sofa/seating area on the starboard side. Further forward there are chairs for lounging, a large flat screen television and further seating/relaxing area. The galley is on the main deck to port.

Leaving the main saloon there are two staterooms on the lower deck forward. The master is to port and the VIP is to starboard. Through a guest hallway, there is a Cedar-lined, 6-person sauna that can also be converted to a closet when needed. There are two additional guest staterooms aft.

Crew accommodations are for 9, but SCOUT II normally runs with 5 or 6 crew. Crew quarters are forward with four double crew cabins. The Captain's cabin is down a few steps portside behind the bridge.

## ACCOMODATIONS

The Master Stateroom, situated portside amidships on the lower deck for reduced motion, is furnished with a teak framed queen bed and matching settee, with a selection of paintings on the pale painted walls.

The Owner's bathroom aft has a free standing, cast iron bathtub on the honey colored travertine marble floor with teak grated blinds covering the portholes. There is a shower inboard.

The VIP stateroom, very similar to the owner's stateroom, is opposite to starboard with queen bed and en suite bathroom with cast iron bathtub and separate shower.

Essentially there are two identical master staterooms.

The Engine Room is amidships.

The portside aft guest stateroom has a double bed and a single bed and en suite bathroom with shower. The starboard aft guest stateroom has a centerline queen bed and en suite bathroom with shower.

All staterooms have recessed, cream painted ceiling beams to provide a classic touch and the teak frames around the beds provide a nautical feel.

All cabins feature flat screen televisions controlled through a new audio/video system that includes a state-of-the-art Matrix distribution system that will feed CCTV, navigation system, Kaleidescape movie system, Sat TV receivers, Apple movie hard drives and an Apple TV system to each television onboard.

## ANCILLARY EQUIPMENT

Air Conditioning System	Seaway Marine custom tube commercial tube condenser system 350,000 BTU Marine Air (3 compressors- new 2016) air handlers replaced (2017)
Fuel Separator & Filters	Alpha-Laval and Racor fuel filtration (new 2016)
Toilet system	Air operated Microflush toilet system with new Head Hunter system forward

## ELECTRONICS AND NAVIGATION EQUIPMENT (Most 2016-2018)

Bridge Displays	4 x KEPMarine 19" LED 500nit Bonded Glass Bridge Display with BridgeView 7" Touchscreen Monitor Management
Radar / Chart Plotter	1 x Furuno S band 30 kW Transmitter, 96 NM Radar System 1 x Furuno X band 12 kW Transmitter, 96 NM Radar System
Electronic Charts	2 x independent Transas systems with RS6b Computer with worldwide portfolios (new Jan. 2016)
UPS	2 x APC Smart-UPS for bridge/communication systems Plus, one spare back up (new Jan. 2017)
GPS	1 x SAAB R5 Supreme Dgps Add-on kit for AIS NAV 1 x SAAB R5 Supreme AIS
Echo Sounder	Furuno FCV581L and Furuno FCV 1900 (new 2016)
Navtex	Furuno NX-700 (new 2016)
Gyro Compass	Sperry Master compass Navigat 200 (new 2017)
Auto Pilot	Simrad with FU80 helm and OS80 chair controller
Horn	5-unit Horn with Kahlenberg controller
AIS	Class A - SAAB interface to Transas
Steering Repeater	Sperry Gyro and Magnetic compass flux interface (new 2017)
Rudder Angle Indicator	Simrad
Log	Furuno IMO compliant Doppler speed log DS-80 (new 2017)



Wind Instruments	B & G system (wind, boat speed, Depth, Air temp, Barometer, Water temp with 10 x B&G H5000 Graphic Display
Ship PC	2 x Hewlett Packard laptops
CCTV	1 x Transcendent control system with 10 remotes controllable cameras on deck and engine room 1 x monitor in the Crew Mess and Captain Cabin Monitor-CCTV system fed through Matrix for viewing on any TV throughout boat and available on phone apps

#### COMMUNICATIONS EQUIPMENT

Satellite Comms	1 x IntellianVI00-1m dome VSAT / 1-Sailor 250 Fleet Broadband
GMDSS system	2 x Sailor 6222-VHF DSC CLASS A with remotes at helm 1 x Sailor 6018 Message terminal/with printer
DSC CLASS A	1 x Sailor 6301 MF/HF 150W DSC CLASS A
Sat C	1 x Sailor Sat C 6101
WIFI	Pak edge RK-1 router with programmed back up onboard, Aegean Shore WIFI receiver, Pep wave Cellular data feed (new in Jan 2019)
Phone System	Avaya PBX with 3 incoming line interfaces/ 14 extensions

#### ENTERTAINMENT EQUIPMENT (Most new 2018)

SAT TV	Intellian Sat receiver to three DirectTV receivers (new 2018)
Audio/Video Equipment	Kaleidescape home theater system, 2018 latest generation, Apple TV, Mac Mini movie hard drive, three direct TV receivers, Navigation and CCTV all interfaced through a digital Matrix system for feeds to every cabin and viewing throughout
TV's	1 x 50-inch Panasonic TV (Sky Lounge) 1 x 65-inch Panasonic TV (Main Saloon) 2 x 37-inch Panasonic TV (Master and Triple Cabin) 2 x 26-inch Panasonic TV (VIP & Double Cabin) 1 x 32-inch Samsung TV (Crew Mess) 5 x 26" Samsung TV's in each crew cabin and captain cabin
DVD/ Blu Ray	Pioneer player in each cabin Panasonic player in sky lounge Panasonic (crew mess)

## TENDERS AND TOYS

Tenders	1 x 5.50m Novurania Rigid Inflatable (550DL) with 115 HP Yamaha outboard motor – new 2016 1 x 4.55m Novurania Rigid Inflatable (460 DL) with 90 HP Yamaha outboard motor
Watersports Equipment	2 x Sets diving gear and snorkels, Hookah dive system  Tubing inflatables / 3-paddle boards 10 x Wetsuits and dry suits in a range of sizes
Fishing Equipment	Release Marine 130lb big game fighting chair with rocket launcher back Two fish wells/ rod holders

## GALLEY AND LAUNDRY

Galley	Miele 5 ring hob 2 x Miele ovens 6 x Miele fridges and 1 x freezer 2 x Hoshizaki ice maker (one on owner's deck exterior) 2 x Foster drawer drink refers (sundeck/owners' deck) New A/V in galley (2019) New walk-in freezer (crew mess) with dual compressor Prodigy Fridge (crew mess) Bosch Stainless dishwasher (crew mess)
Laundry	2 x Miele professional washing machines (new 2018) 2 x Miele Professional dryers (new 2018)

## SAFETY

Mini ISM in place for full flag state compliance  
Flag state annual surveys completed March 2019

Fixed Fire Fighting	Lloyds Class Approved Fixed Fire Fighting System StatX fixed firefighting cannisters in new stern and machinery sound enclosures
Fire Equipment	4 x Air cylinders

	2 x Fire suits
	6 x Hoses & nozzles
	2 x SCBA breathing apparatus sets
	2 x axes
LSA	2 x Line throwers
	8 x Red hand-held flares
	8 x Red parachute Flares
	3 x Orange buoyant Signal
	2 x EPIRB
	2 x SART
	19 x Cold water immersion Suits
	19 x Warm water immersion Suits
	30 x Inflatable Lifejackets
	18 x Smoke hoods
	20 x Smoke alarms
	2 x Heat detectors (Galley, and engine room)
	28 x Fire extinguishers (Co2, halotron, powder and foam)
	2 x 10-man life rafts (1 with EPIRB)
	2 x 8-man life rafts
	2 x portable radios for the life rafts
	2 x Explosion proof portable radios for fire fighting
	1 x Portable signal light

## ADDITIONAL REFIT WORK

SCOUT II's current owner and Captain are very knowledgeable and extremely detailed. The refit was managed with a "no budget" approach and SCOUT II was upgraded to the latest standards to ensure trouble free global cruising for the future. All works were detailed and photographed throughout the refit and approved by Lloyds.

The detailed list of SCOUT II's upgrades is extensive. Below additional works/upgrades carried out between 2016 and 2018 in addition to that already mentioned:

- All sea valves/hull openings (32 valves) refurbished or replaced
- Anchors replaced and sized up including replacement of chain and windlass wildcats and new markings on anchor chains
- Anchor pockets and nose plate polished

- Hull UHP (water) new antifoul applied - 2 coats (Lloyds approved) and new zinc anodes
- All fuel and water tanks opened inspected and water tank paint touched up
- All new bridge equipment
- All new LSA, medical & fire kits to MCA standard inc new life rafts, life rings, jackets etc (SOLAS)
- New FCI De-salination units (water makers)
- New wildcats, servicing by manufacturer and testing of windlass
- 2 x new Stidd helm chairs
- Steering gear serviced
- Replacement of various valves and pumps including main fire pump
- Transfer fuel pumps and pipework and manifolds replaced and installation of fuel counters
- 2 x new Carlisle and Finch remote operated spotlights
- New aft main deck table and chairs
- New BBQ/Egg and Pizza Oven installed on sundeck
- New infra-red heaters above owners exterior table
- New custom waterfall hot tub and sunning area
- New heavier ground tackle (chain and anchors)
- New fishing gear and Release Marine 130lb big game chair
- Crew areas updated in décor, electronics and comfort

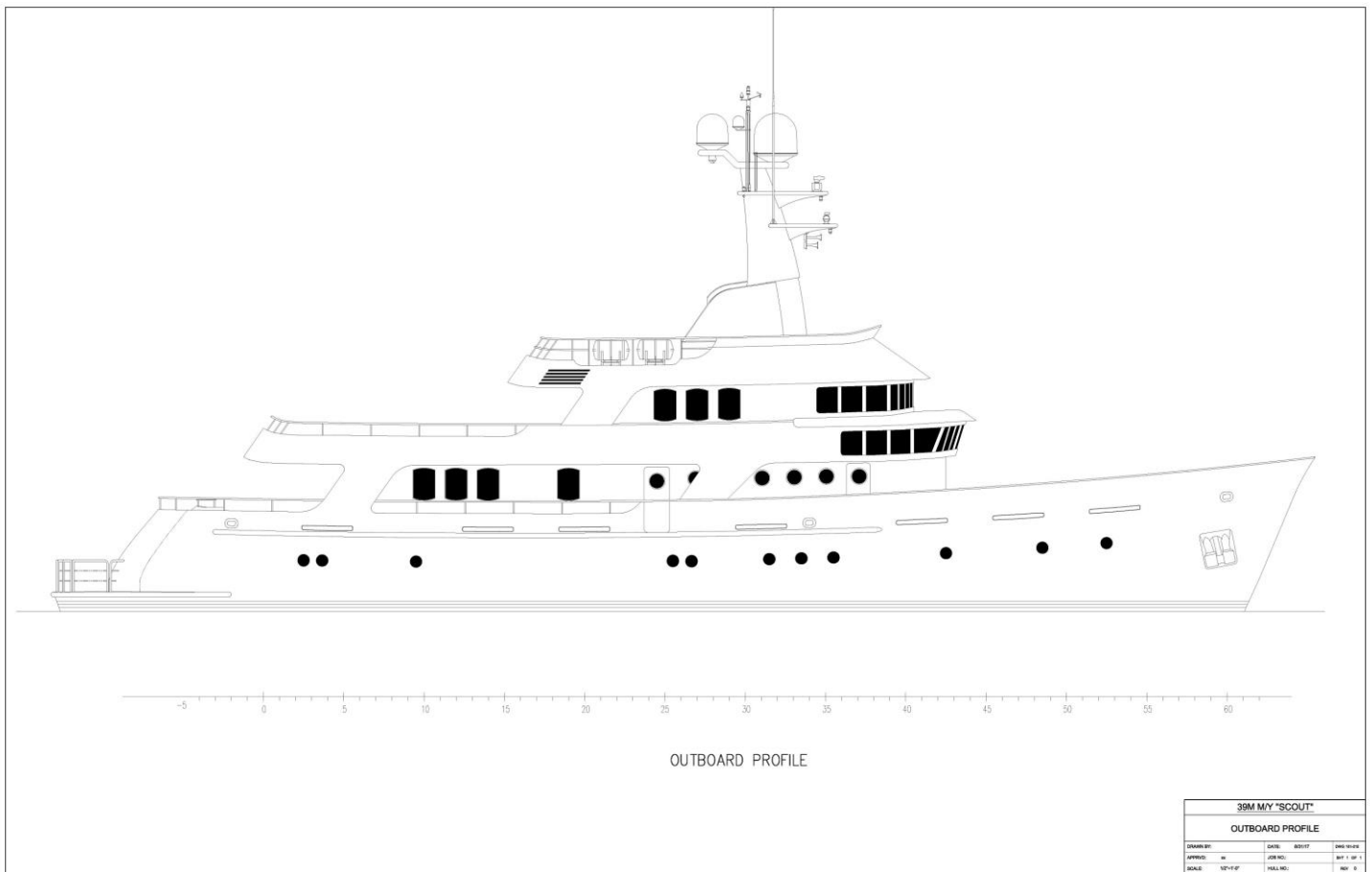
#### REMARKS:

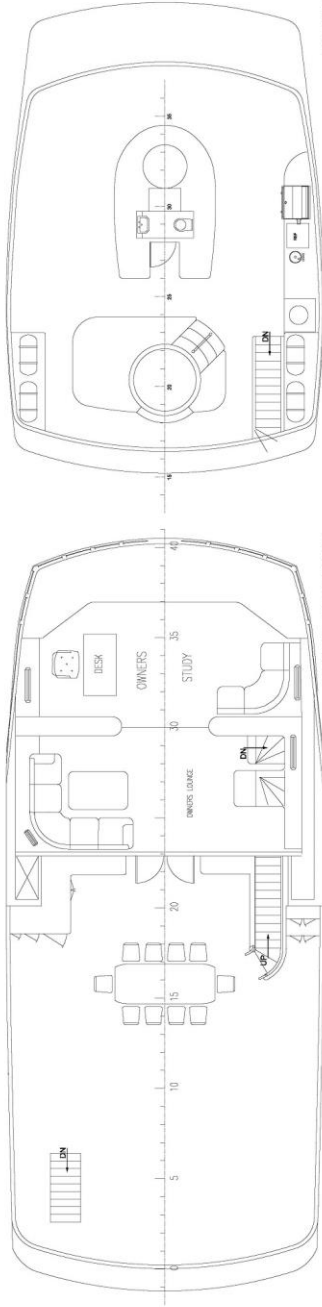
Built by Brooke Yachts, UK and designed by Terence Disdale, Scout II is a sturdy, proven world cruising exploration yacht. She was entirely rebuilt and re-equipped with high-tech engineering and state-of-the-art equipment between 2016-2018. Punching way above her 397 GT, she has 4 staterooms, exceptional outside deck spaces, and 4,000 nm range. She is one of the true "explorer" yachts. Heavy, comfortable, seaworthy and with exceptionally heavy scantlings, she can smash through any sea conditions in safety and comfort.

#### DISCLAIMER

NOT AVAILABLE FOR SALE TO U.S RESIDENTS WHILE IN U.S. WATERS

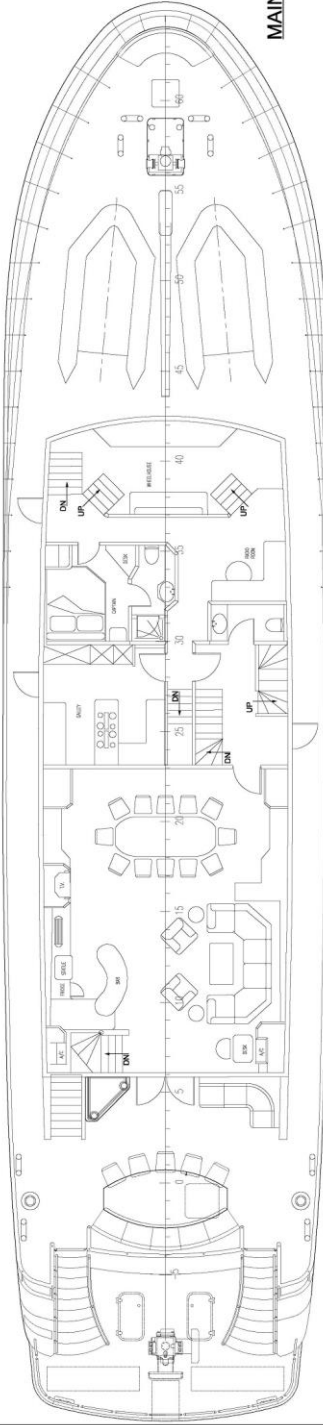
*All speeds, capacities, consumption, etc. are approximate or estimated; measurements can also be approximate. Specifications are provided for information only and particulars herein obtained from sources believed to be correct, but are not guaranteed. Buyer should instruct his agent and/or surveyor to check all details for accuracy. Offered subject to prior sale, price and/or inventory change, or withdrawal from the market without notification.*



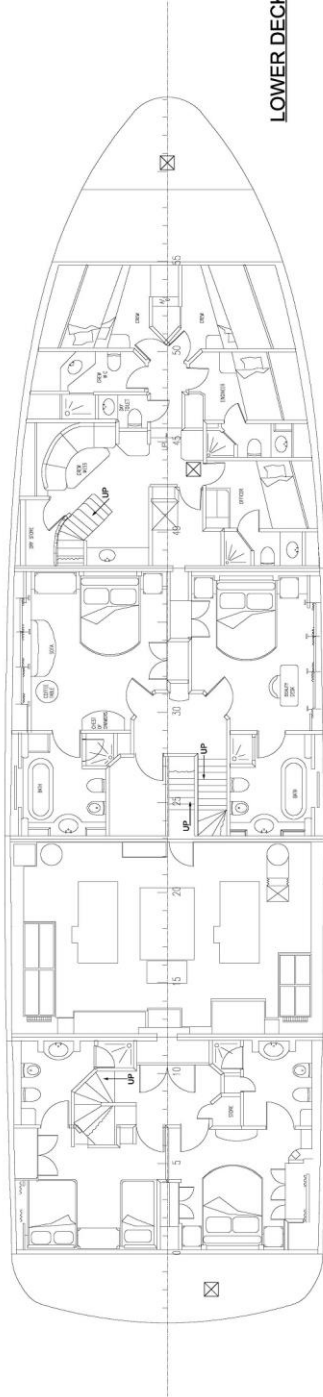


OWNER'S DECK

SUN DECK



MAIN DECK



LOWER DECK

<b>MY ALLER YACHT &amp; NAVAL DESIGN, LLC</b> <small>This drawing, design, concept or construction is the property of MY ALLER YACHT &amp; NAVAL DESIGN, LLC. NO PART OF THIS DRAWING, DESIGN, CONCEPT OR CONSTRUCTION MAY BE REPRODUCED OR TRANSMITTED IN ANY FORM OR BY ANY MEANS, ELECTRONIC OR MECHANICAL, INCLUDING PHOTOCOPYING, RECORDING, OR BY ANY INFORMATION STORAGE AND RETRIEVAL SYSTEM, WITHOUT THE WRITTEN PERMISSION OF MY ALLER YACHT &amp; NAVAL DESIGN, LLC.</small>		<b>MY "SCOUT"</b>
<b>GENERAL ARRANGEMENT</b>		DRAWING NO. 004 DATE: 05/20/17 JOB NO. 16111301
<small>NOT TO SCALE</small>		SHEET 1 OF 1 16111301